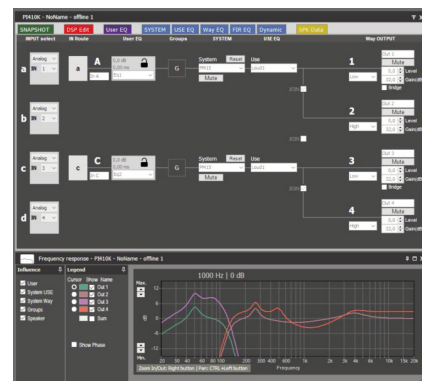
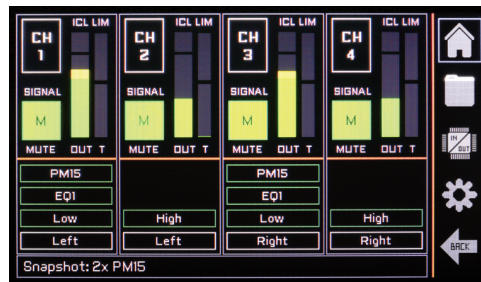


- Extra-large TFT display, capacitive touch panel user interface
- 64 bit double-precision 96kHz DSP process
- High performance 96kHz/24 bits AD/DA converters
- Available versions with AES67 (ATMOS and RAVENNA compatible), Dante™ and AES3 Digital inputs
- Two ports Ethernet switch for daisy chain connection
- USB port for firmware update and DSP control
- High voltage output for high headroom performances
- Similar power per channel in any impedance
- Advanced power management to squeeze until the last watt of your speakers
- Exceptional power sharing in asymmetrical loads
- Powerful and fast response cooling system

DSP management: RAM OCS and amplifier display:

Two general working modes: User and Advanced (manufacturer)

- User functionalities:
 - Input Routing/Matrix (basic or advanced)
 - Input EQ section with 7 filters and 20 memories
 - Input EQ Mode section, predefined by the manufacturer
 - Speaker Preset selection predefined by the manufacturer
 - Snapshot library management (up to 20 snapshots)
 - Advanced Control Groups
- Advanced functionalities (manufacturer):
 - Input EQ Mode section creation (10 filters, 20 Modes)
 - Way routing section (Locked/Unlocked)
 - IIR EQ section: XOver, Gain, Delay, and 12 EQ filters
 - FIR EQ section: 22 linear phase XOver and EQ filters, 20 Phase filters or custom file up to 1000 taps
 - RMS and Peak Dynamic control
 - Snapshot library management up to 20 presets (Locked/Unlocked)
 - Speaker Preset library management (up to 100 presets)
 - 5 Security levels definition to limit final user functionality



OUTPUT POWER	Pi2- 3K	Pi2-5K	Pi4-6K	Pi4-10K
2 ohms	2x 1450 W	2x 2500 W	4x 1450 W	4x 2500 W
4 ohms	2x 1500 W	2x 2500 W	4x 1500 W	4x 2500 W
8 ohms	2x 1100 W	2x 1600 W	4x 1100 W	4x 1600 W
Hi-Z 70V	2x 1500 W	2x 2500 W	4x 1500 W	4x 2500 W
Hi-Z 100V	2x 800 W	2x 2500 W	4x 800W	4x 2500 W

DSP Specifications - RAM_OCS Control

Overall:

- High performance 96kHz/24 bits AD/DA converters
- 64 bit double-precision 96kHz DSP process
- 0.85 ms minimum process latency time
- Custom FIR process up to 1000 taps
- AES67, Dante and AES3 input versions

Input Section (x4):

- Gain, Mute and Phase inversion
- Delay: in In A: 333ms (114m), In B/C/D: 90ms (31m)
- Input EQ: 36 filters (Param., Shelving, LP, HP, BP, SB, AP)

Output Section (x4):

- Crossover Filters: FIR and IIR (up to 48dB/oct, Butterw./LR/Bessel)
- Output Delay: 0 to 31 meters (90ms) per channel
- Output IIR EQ: 12 filters per channel (Param., Shel, LP, HP, BP, SB, AP)

- Output FIR EQ: 22 filters per channel (Parametric, Shelving, LP, HP, BP, SB, AP), or Custom. Up to 1000 taps
- RMS and Peak limiter per channel

Communications:

- Two ports Ethernet switch for daisy chain connection
- USB 2.0 Type B port

Miscellaneous:

- 100 Manufacturer system preset memories library
- 20 User preset memories library
- 20 User snapshot memories library
- Manufacturer/User passwords
- User control groups for virtual Equalization, Gain and Delay
- Zones definition for library management and alerts information
- Smart® analysis software integration

Amplifier Specifications

	Pi2-3K	Pi2-5K	Pi4-6K	Pi4-10K
Number of channels	2	2	4	4
Total output power	3000 W	5000 W	6000 W	10000 W
Output Power* (All ch.'s driven/single channel)				
2 ohm	2x 1450 W ² 1x 1450 W ²	2x 2500 W ² 1x 2500 W ²	4x 1450 W ² 1x 1450 W ²	4x 2500 W ² 1x 2500 W ²
4 ohm	2x 1500 W 1x 1750 W	2x 2500 W 1x 2800 W	4x 1500 W 1x 1900 W	4x 2500 W ¹ 1x 3000 W
8 ohm	2x 1100 W 1x 1150 W	2x 1600 W 1x 1700 W	4x 1100 W 1x 1200 W	4x 1600 W 1x 1800 W
4 ohm Bridged	2900 W ²	5000 W ²	2x 2900 W ²	2x 5000 W ²
8 ohm Bridged	3000 W	5000 W	2x 3000 W	2x 5000 W ¹
Hi-Z 70V	2x 1500 W	2x 2500 W ²	4x 1500 W	4x 2500 W ²
Hi-Z 100V	2x 800 W	2x 2500 W	4x 800 W	4x 2500 W ¹
Max output voltage	144 V _{peak}	176 V _{peak}	144 V _{peak}	176 V _{peak}
Max output current	38 A _{peak}	50 A _{peak}	38 A _{peak}	50 A _{peak}
Total Harmonic Distortion	<0.05%			
Crosstalk (20Hz-1kHz), typical	>70dB			
Voltage Gain	26dB to 44dB (1dB step)			
SNR	106 dBA	107.5 dBA	106 dBA	107.5 dBA
Nominal Mains Voltage	185V-240V AC, 50Hz / 100V-125V AC, 60 Hz			
Consumption				
230 V AC - 1/8 rated power (4 ohm)	7.1 A / 1080 W	8.3 A / 1257 W	15.2 A / 2315 W	16.0 A / 2434 W
120 V AC - 1/8 rated power (4 ohm)	13.6 A / 1080 W	15.9 A / 1257 W	29.2 A / 2315 W	30.7 A / 2434 W
Idle	0.5 A / 69 W			
Dimensions W x H x D	483x89x330 mm - 19x3.5x13 in			
Weight Net	6 kg / 13.2 lb	8.5 kg / 18.7 lb	8.5 kg / 18.7 lb	8.5 kg / 18.7 lb
Protections: Soft-start, Turn-on Turn-off transients, Muting at turn-on, Over-heating, DC, RF, Short-circuit, Open or mismatched loads, Overloaded power supply, ICL™, PMS™, and SSP™				

* IEC filtered pink noise signal (40Hz-5kHz, 12dB crest factor)

¹ PMS can limit output to prevent excessive current draw tripping the mains breaker.

² SSP can limit output to prevent excessive heating.

Dante
AES67

RAM Audio®

©2021 by C.E. Studio-2 s.l. Pol.Ind. La Figuera - C/Rosa de Luxemburgo nº34 - 46970 Alaquas - Valencia - SPAIN

Phone: +34 96 127 30 54 - ramaudio.com - e-mail: info@ramaudio.com

RAM Audio®, PMS™, SSP™, ICL™ and QuantaPulse™ are registered trademarks of C.E. Studio-2 s.l.. All other names are trademarks of their respective companies.